

## YTK GC-550 5M Projector Lift

(Close, normal setting)



### Features

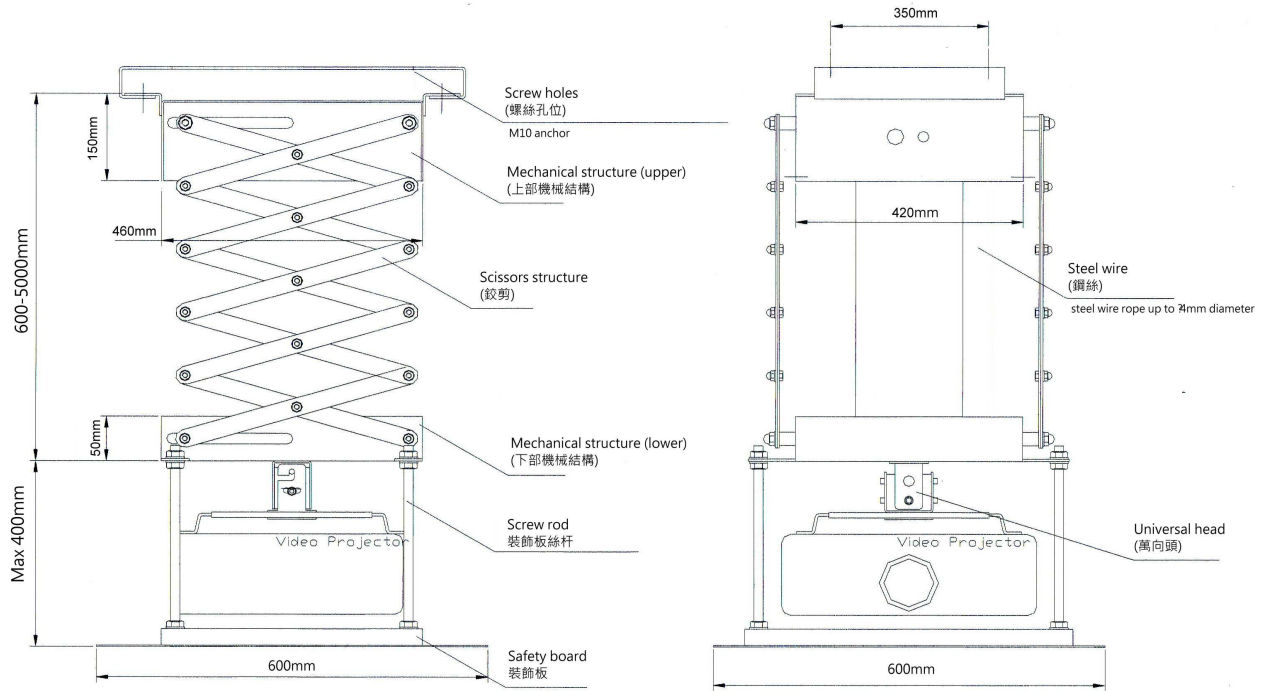
- 5m projector lift
- Supply RS232/RS485, Including: Manual and wireless remote control
- Function: Up, Down, stop
- Material: Iron of A3
- USA damping motor , Brake Function
- The left / right is 12 groups scissors x 2 , Two section of distance corrections for lift function (close , normal setting)
- The adjustable projector angle mount bracket (the left/right 0-30 ° ; Up/Down 0-40 ° )
- Automatic setting of Two section: stop
- Color: Phenolic plastics , Surface treatment: Bake of high temperature

### Specification

- Motion max distance: 4400mm
- Weight: 40kg
- Load weight: 50kg
- Board size L x W (mm): 600 x 600
- Between true ceiling and false ceiling the height(mm): 900

- Power Supply: 220 V / 50 ~ 60 Hz
- Dimensions: 460(W) x 420 (D) x600(H) mm.

## Drawing



## Suitable use:

Hall, Lecture Theaters, Cinemas

Warranty: 12 Month

**CB CE**